

*Lepanthes garciae* Bogarín & D.Jiménez, spec. nov.

TYPE Costa Rica. Puntarenas: Buenos Aires, Buenos Aires, Reserva Biológica Dúrika, sector Bosque Perfecto, 9°19'5.20"N, 83°12'24.97"W, 2485 m, epífitas, invenit Daniel Jiménez, Eugenio García et Pontus Aratoun. Floreció en cultivo en el Jardín Botánico Lankester, 13 abril 2011, D. Jiménez sub D. Bogarín 8535 (holotype, JBL).

DIAGNOSIS *Lepanthes garciae* is similar to *Lepanthes dolabriformis* Luer, from which it can be distinguished by the inflorescences shorter than the leaves, up to 1 cm long, the entire, glabrous petals with the upper lobe acute and the entire, glabrous lip with the blades ovate and the apices subfalcate.

Plant epiphytic, caespitose, erect or pendent, up to 5.5 cm tall; roots slender, flexuous, to 1 mm in diameter. Ramicauls slender, erect, 2.3–3.5 cm long, enclosed by 8 glabrous, lepanthiform sheaths, the ostia minutely ciliate, ovate, acute, adpressed; leaves subcoriaceous, elliptic, acute, conduplicate, emarginate, with a short apiculus, purplish beneath, 1.9–2.5 × 0.7–1.1 cm, the rounded base narrowing into a petiole less than 1 mm long. Inflorescence racemose, distichous, glabrous, successively flowered, born above the leaf, shorter than leaves, up to 1 cm long, peduncle 4 mm long, rachis 6 mm long. Floral bracts ovate, acuminate, conduplicate, membranaceous, 1 mm long, muriculate. Pedicels 1.5 mm long, persistent. Ovary to 1 mm long, glabrous. Flowers with yellow-orangish sepals stained with red at base, the petals and lip scarlet. Dorsal sepal ovate, acute, ciliate, dorsally with three ciliate keels, connate to the lateral sepals for about 1.1 mm, 3.5

× 2.5 mm. Lateral sepals ovate, acute, ciliate, dorsally with three ciliate keels, connate for 1.3 mm, 3.5 × 2.0 mm. Petals transversely bilobed, entire, 1.2 × 3.6 mm, the upper lobe oblong or triangular, acute to obtuse, subfalcate, to 2.5 mm long, the lower lobe ovate to triangular, obtuse, smaller than the upper lobe, to 1.1 mm long. Lip bilobate, adnate to the column, the blades ovate with rounded ciliolate ends, embracing the column 1.7 × 2.0 cm, the connectives cuneate, oblong, to 5 mm long, the body thick, oblong, rounded, connate to the base of the column, the appendix thick, oblong, pubescent. Column cylindric, to 1.2 mm long, mucronate, the anther dorsal and the stigma subapical. Pollinia two, ovoid, basally filiform. Anther cap triangular, cucullate.

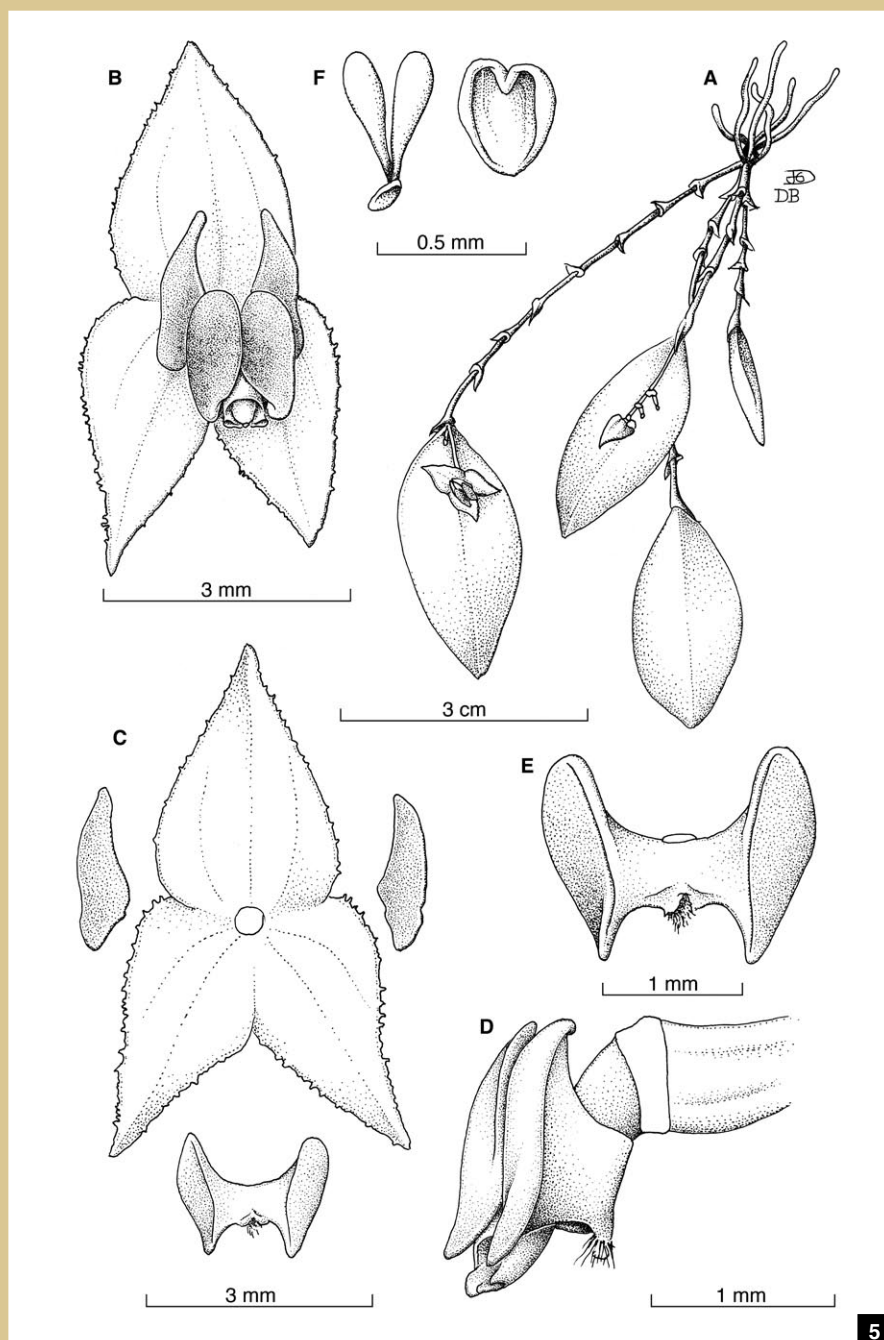
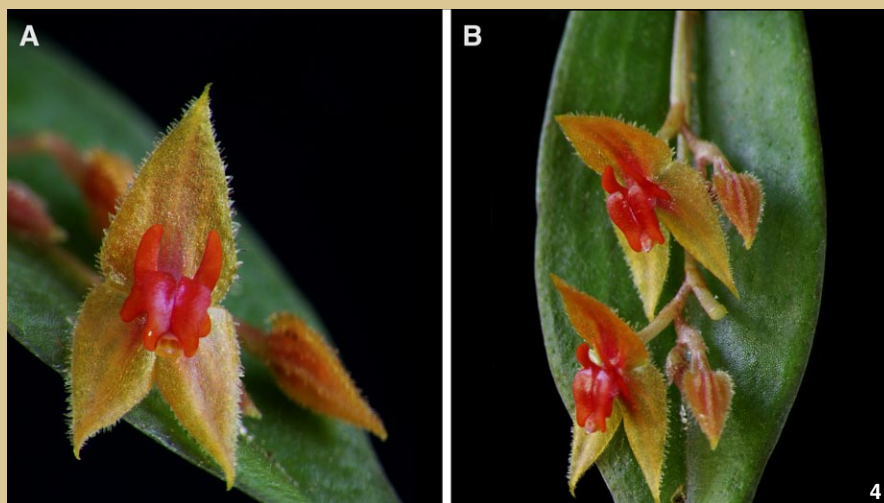
**DISTRIBUTION** Only known from the type locality.

**EPONYMY** Dedicated to biologist Eugenio García, who participated in the type collection. He kindly guided us through the paths of the reserve. His support has been fundamental for understanding the complex environment biodynamics at Durika Biological Reserve.

**HABITAT AND ECOLOGY** Epiphytic in lower montane wet forest in shady condition at around 7,500–8,200 feet (2,300–2,500 m) elevation. Most of the plants we found were growing on hanging lianas from the canopy of the forest.

**PHENOLOGY** Plants flower through the year but mainly from April to July.

**DISCUSSION** *Lepanthes garciae* is similar to *L. dolabriformis* Luer, from which it can be distinguished by the inflorescences up to 1 cm long, shorter than the leaves (rather than 1.5 cm long, as long as the leaves or slightly larger), the entire, glabrous petals with the upper lobe acute (rather than ciliate, pubescent with the upper lobe truncate), the entire, glabrous lip with ovate blades and the apices subfalcate (rather than ciliate, pubescent with the blades narrowly ovate and the apices falcate; Luer 1996).



- [4] Flower morphology of *Lepanthes garciae* Bogarín & D.Jiménez. Photograph by Daniel Jiménez from the type plant.
- [5] *Lepanthes garciae* Bogarín & D.Jiménez. A — Habit. B — Flower. C — Perianth flatten. D — Lip, spread. E — Column and lip, lateral view. Drawings by D. Bogarín and D. Jiménez